



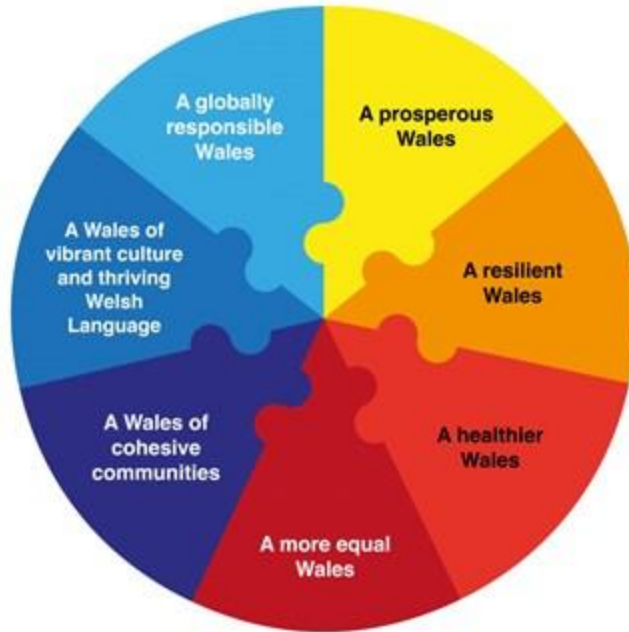
CYNGOR CYMUNED CEFN COMMUNITY COUNCIL

Annual report on the Well-Being of Future Generations Act (Wales) 2015 for 2022-2023

About this report

Wales faces several challenges now and in the future, such as climate change, poverty, health inequalities and jobs and growth. To tackle these, we need to work together. To give current and future generations a good quality of life we need to think about the long-term impact of the decisions we make. The Well-being of Future Generations (Wales) Act 2015 gives a legally binding common purpose – the seven well-being goals – for national government, local government, local health boards and other specified public bodies. It details the ways in which specified public bodies must work and work together to improve the well-being of Wales.

This report describes how Cefn Community Council has contributed to the seven well-being goals for the community.



Wrexham Public Service Board (PSB) (www.wrexhampsb.org)

Cefn Community Council, because it is a larger community council, is also required to ensure that it complies with and contributes to the objectives of the Local Well-Being Plan 2018-2023 as produced by the Wrexham Public Services Board. The Public Service Board (PSB) published its first annual report in June 2019 detailing progress on its determined objectives. The PSB have agreed 15 objectives but for 2022 – 23 and going forward have focused on two main objectives of Community Resilience, incorporating climate change and environmental resilience. These are:-

- All people have opportunities to learn and develop throughout their lives
 - Children and young people are given a healthy start in life

They also agreed to focus on two or three additional objectives each year over the five- year plan period, covering all 15 by 2023. In Year 1 these were:

- People have positive mental health
- People can live healthily, happily, and independently in old age
 - People can make healthy choices.

The challenge for the Community Council is to demonstrate how it can make a positive contribution to these objectives, even though these objectives are strategically determined and more relevant to larger statutory bodies, who can more effectively influence their progress.

All community councils have their own local priorities which are important to their communities as well as having to manage within an agreed budget. Budgetary pressures, which are exacerbated by the cost of devolved functions previously funded by the principal authority, can create tensions and limit what a community council can be realistically expected to provide.

Additionally, to date, there has been no clear communication with the community council sector from the PSB or advice on how the sector can meaningfully contribute to the objectives.

The Community Council has therefore focused on contributing to some of the 15 objectives in the PSB plan whilst “mapping” its activities within the seven well-being goals. The other 10 objectives within the five-year plan are:

- The town is vibrant and welcoming
 - There are good employment opportunities in Wrexham
 - There is a range of things for people to do in their spare time
 - The economy in rural areas is well supported and can thrive
- All people have access to good quality, appropriate homes throughout their lives
 - People can travel easily around the county and beyond
 - The Welsh language is thriving
 - Tourism supports the local economy
 - The county borough is a safe place to live
 - Our communities are prepared for the future

The seven well-being goals for Wales

The well-being of Future Generations (Wales) Act 2015 outlines seven well-being goals which need to be considered when drawing up local objectives. A description of each well-being goal and the issues identified within that theme is provided below. All of the issues identified in this needs analysis are cross cutting and impact on more than one of these spheres of well-being.

Prosperous (1)	An innovative, productive and low carbon society which recognises the limits of the global environment and therefore uses resources efficiently and proportionately (including acting on climate change); and which develops a skilled and well educated population in an economy which generates wealth and provides employment opportunities, allowing people to take advantage of the wealth generated through securing decent work.
Resilient (2)	A nation which maintains and enhances a biodiverse natural environment with health functioning eco systems that support social, economic and ecological resilience and the capacity to adapt to change (for example climate change)
Healthier (3)	A society in which people's physical and mental well-being is maximised and in which choices and behaviours that benefit future health are understood
More equal (4)	A society that enables people to fulfil their potential no matter what their background or circumstances (including their socio-economic background and circumstances)
Cohesive communities (5)	Attractive, viable safe and well-connected communities
Vibrant culture and thriving Welsh language (6)	A society that promotes and protects culture, heritage and the Welsh language, and which encourages people to participate in the arts and sports and recreation.
Globally responsive (7)	A nation which, when doing anything to improve the economic, social, environmental and cultural well-being of Wales, takes account of whether doing such a thing may make a positive contribution to global well-being

Matrix showing cross-cutting themes

Some of the activities of Cefn Community Council towards the well-being goals are cross cutting and impact on more than one of these spheres of well-being. The grids below give an interpretation of how each contribution might fit within the list of well-being goals.

Prosperous (1)	Resilient (2)	Healthier (3)	More equal (4)	Cohesive (5)	Culture (6)	Globally responsive (7)
-----------------------	----------------------	----------------------	-----------------------	---------------------	--------------------	--------------------------------

1	2	3	4	5	6	7
---	---	---	---	---	---	---

1.	The Community Advice Service	1	2	3	4	5		7
2.	School Holiday Play Provision		2	3	4	5	6	7
3.	Maintenance and repair of public play facilities			3	4	5	6	
4.	Youth Work Provision			3	4	5		
5.	Community Agent		2	3	4	5	6	
6.	Community Litter pick		2			5		7
7.	Crime prevention and reduction					5		
8.	Financial assistance			3	4	5	6	
9.	Community Events	1	2	3	4	5	6	
10	George Edwards Hall	1	2	3	4	5	6	
11	Environmental/Climate Change		2	3		5		7
12	Competent Council					5	6	

Introduction and Context

Cefn Community Council serves approximately 7,000 residents

It is made up of 3 County Borough electoral wards being Cefn East with 1 member, Cefn West with 1 member and Acrefair North with 1 member. There are 4 community electoral wards, Cefn, Plas Madoc, Rhosymedre & Cefn Bychan and Acrefair & Penybryn.

The Community Council office is situated at George Edwards Hall, Well Street, Cefn, LL14 3AE, with the Council Chamber being housed within the building on the upper floor. There is 1 full time groundsman, 1 part time caretaker, 1 Clerk, 1 office administrator and a Community Agent.

The tax base for the area in 2022-23 is 2265. Precept requirement for 2022-2023 is £154,776.00 also income from external sources, as such falls within the requirement to report annually on its contribution to the Public Service Board Well-being and Future Generations Act Plan.

Our Core Values:

Ethical, Empowering, Honest & Trustworthy, Respectful, Inclusive & Caring & Responsible.

1. **Community Advice Service** – Citizens Advice Bureau hold sessions at Cefn Mawr Library every Monday
2. **School Holiday Play Provision** — Recognising that holiday play schemes can provide a place of safety where children can experience good adult role models, informal education, fun and friendship, the Community Council provides funding to enable Wrexham County

Borough Council to provide schemes at the following sites during the Easter, Whit, Summer and October school holidays:

- Plas Kynaston, Cefn — Mondays and Fridays
- Acrefair — Wednesdays

The cost of play provision is in the region of £3250.00 in 2021/22

3. **Inspection and Maintenance of Play Areas and Facilities**— The Community Council firmly believes that environments for play make up part of the landscape of childhood and is committed to ensuring that children’s opportunities for play, here in Cefn Community, are protected. To this end, following Wrexham County Borough Council's decision to withdraw funding for the inspection, maintenance and repair of the County Borough Council controlled play areas and facilities in Cefn, the Community Council decided to enter into a service level agreement with the County Borough Council to ensure the continuation of this much needed service with the Community Council meeting the cost. Had the Community Council not taken this action, the various play areas (and facilities) would have closed to the detriment of children throughout the community.

Currently, the following play areas are covered by the service level agreement with Wrexham Council:

- Lancaster Terrace, Acrefair
- Ash Grove, Plas Madoc
- Bran, Plas Madoc
- Dinas, Glaslyn, Plas Madoc
- Gwynant, Plas Madoc
- Church Street Rhosymedre
- Short Lane, Newbridge
- Ty Mawr Country Park
- BMX Track and agility area, Ty Mawr Country Park
- Dolydd Lane, Cefn Mawr
- MUGA/Goal End, Rhosymedre

The Council's spending on this service is in the region of £14,00.00 in 2021/22. The Council actively seek financial opportunities to upgrade and enhance the facilities.

4. **Youth Work Provision** — In recognition of the fact that good youth work helps young people learn about themselves, others and society, through non-formal educational activities which combine enjoyment, challenge and learning, the Community Council fund

the provision of two sessions a week through a SLA agreement with WCBC. The sessions are held at George Edwards Hall on a Monday and Wednesday evening.

The cost of this service amounted to £11,600.00 in 2021/22.

5. **Community Agent Scheme** — The Community Council employs a part-time Community Agent (21 hours per week). 16 hours is funded by Wrexham County Borough Council via a Welsh Government grant, 5 hours are funded direct by Cefn Community Council

The principal role of the Community Agent is to work with the over 50s, providing easy access to a wide range of information that will enable them to make informed choices about their present and future needs. The aim is to help older people feel more independent, secure, and cared for and to have a better life. Particular attention is given to those who may need support or are particularly vulnerable with the Community Agent arranging referrals to the relevant statutory or voluntary organisations as required. The Agent also maintains close contact with various local organisations.

The Council have received a grant of £12,000 towards the cost of the provision in 2022/23.

6. **Community Litter Pick** – Councillors meet once a month, along with volunteers and other agencies and litter pick an area on a rotation basis between the four wards.



7. **Crime prevention and reduction** - The Community Council works closely with the local Police. The local PCSO attend Council meetings when they are able, and each agenda contains a dedicated item on community policing to enable the officer to provide updates and respond to any issues/concerns raised by Council Members.

The speeding of vehicles on local roads has been the source of much concern with the result that the Council has financed the provision of a radar speed gun for the use by PCSO's to enable regular speed checks to be conducted. Council also plans to provide vehicle activated signs at speeding hot spots in the community.

Council have also purchased target hardening equipment which provides residents in the community safety equipment for their homes as well as literature to display.

8. **Financial Assistance** – The Council support both local & national organisations which provide a service to the Cefn Community. The following grants were awarded in 2021/22

Wales Air Ambulance	500.00
Calon FM	100.00
Hope House	500.00
Urdd Eisteddfod	100.00
Nightingale House	1,000.00
Air Cadets	200.00
Cefn Mawr Historical Society	200.00
CRNCA	200.00
Friends of Ruabon	200.00
St John's Church	200.00
Rhosymedre Methodist Church	200.00
Hampden Bowling Club	200.00
Ysgol Acrefair	200.00
Ysgol Rhosymedre	200.00
Ysgol Min Y Ddol	200.00
Ysgol Cefn Mawr	200.00
Friends of Llys Y Craig	200.00
Cefn OAP Welfare	200.00
Offa Community Council	200.00

9. **Community Events and Benefits** – The community Council arranges free events throughout the year for its residents. In July an annual Garden competition is held for all residents in the community, this has taken place for twenty years, there are five categories which has been judged by a horticulturist from Derwen College, Oswestry. Students also accompany the judge on the day and a presentation event is held at the

George Edwards Hall in September, where a buffet lunch is provided. Below is a picture of the best garden overall winner in 2022



Students and staff also attend every May to plant the summer flowers in various containers around the community, Tesco Cefn Mawr have assisted on many occasions, who help on the day planting and provide lunch.



The Community Council hold a Christmas event at the George Edwards Hall, which local groups and primary schools get involved with by holding stalls allowing them to raise funds. There is a Santa's grotto for the children to enjoy and receive a gift, this was very well attended last Christmas.

For all local businesses in the community, the Community Council ran a window dressing competition. This was well received, bringing the community together and resulted in good Christmas cheer. The Deputy Mayor and Mayoress of Wrexham judged the window displays, the winner in December 2021 was The Party Shop, Crane Street.



The council celebrate resident's big milestone anniversaries and birthdays, with the past year we have helped celebrate over ten birthdays and six anniversaries, allowing the recipients to pick a gift of either flowers, chocolates, or a gift voucher worth £15. This is presented by the council chairman along with a card.





10. George Edwards Hall – The George Edwards Hall was officially opened on 18th September 1911. The Hall, built to the design was completed at a total cost – erection and equipment – of £2,066-13-6d. The extension to the building was opened on 12th April 1978

The George Edwards Hall was operating as a cinema by 1914. The building formerly used for stage presentations.

It has a 26 feet wide proscenium, an 18 feet deep stage and two dressing rooms. By 1934 it had been re-named Stanley Cinema and was equipped with an AWH sound system. By 1944, it had been re-named People’s Cinema and was still open in 1954.

By 2000, it had reverted to its original name George Edwards Hall and was in use as a community hall. It had retained its full stage facilities, and had a flat floor for dancing, with the catering facilities in the former stall projection room.

The Hall is situated on Well Street, Cefn Mawr the council offices are based here, monthly meetings of the council are held in the council chambers.

The main hall is equipped with a fully functioning kitchen. The lower room also has full kitchen facilities and can accommodate smaller parties or meetings and is currently used two evenings a week for the youth club. The hall is available to hire to the community for various functions, long term hirers include Dance Zone Academy, Slimming World and a local line dancing group. The hall is frequently hired for birthday parties. Bookings have increased over the last few years, however during the pandemic the hall was closed to the public and could only remain open to essential service users which ultimately has impacted on the income stream for the council. Now, in 2022, bookings have started to increase not only for private functions but also for community benefit.

April 2022 saw the return of the first large scale event hosted outside of the council. The Maelor Boxing Club, a much loved local club, hired the hall for their annual tournament and it was a huge success.

The council chamber includes a full hybrid system. This hybrid system allows the council to be more inclusive in its meetings, and accessibility is easier for members of the community who are unable to attend council meetings in person. The system is also a benefit to other community groups who can book the facilities. Coleg Cambria are to host free adult learning classes this year in the council chamber making use of the great facilities on offer.

11. Environmental/Climate Change – Council have recently converted over 500 streetlights to LED's which has been funded via an interest free loan, through Salix which is a Welsh Government backed project at a cost of over £80,000. Repayments will commence in April 2022, over a six year repayment period. It is estimated over 70% savings on energy costs, which will cover loan repayments, substantial savings will be made on maintenance costs, which will be reinvested into replacement columns /extra lighting where required.

In 2021 council erected eleven dog bag dispensers at various points around the community to combat and reduce dog fouling offences. The dispensers are checked every two weeks and where necessary are re-filled with dog waste bags. The units are well used and have proved to be an effective resource to reduce incidents of dog fouling within the community.

Cefn Community Council work closely with partner organisations and have recently completed a project with Our Picturesque Landscape, the project has opened up the view of the Valley from Cefn Bank, by removing some of the larger trees, following careful consideration, resulting in a more varied age structure benefitting the woodland, wildlife and people as discrete views will be opened across the World Heritage Site. The work involved coppicing of mature shrub species, selective thinning of tree species and the felling of unstable stems close to pathways. Councillors, local groups and volunteers met to work on the Cefn Bank area, which included the rebuilding the semi-circle stone wall, erection of a metal bench to enjoy the views and refurbishment of an existing bench. Our Picturesque Landscape, National Lottery Heritage Funded project is in the Dee Valley.



After securing a grant from National Lottery Green Spaces and Nature, council have been able to plant wildflower meadows which have been planted at various locations throughout the community creating diverse ecosystems and natural grassland habitats, by removing the requirement to mow these seeded areas cutting carbon emissions and creating beautiful landscapes.



This year, we have held two wildlife walks in the community, with another to be held before the end of 2022. These are not only to promote health and wellbeing, but also to create an

understanding of our green spaces and the diverse wildlife within. This being especially important as a large part of the area was traditionally stone and chemical works, it has been invaluable in reconnecting the community with its surroundings and create an understanding of how nature is reclaiming the land.

In 2022, thanks to grant funding from Landfill Disposals Tax Communities Scheme, council have been able to replace the doors and windows at George Edwards hall, and also the roof of the council building extension, this was with a view to making the building more energy efficient and cost effective to run, but also remedial works needed to be undertaken to ensure the future of the hall and stop the building falling into disrepair. As one of last public owned buildings in the area, and over 100 years old, it is vital that the hall be preserved for future generations.

12. Competent Council – These are challenging times for community councils with many new challenges and opportunities, it is important to be ready for the future. A number of competency tests are emerging to help community councils determine how well equipped they are to meet the challenge ahead. These might include:

- A democracy test - % of councillors must be elected at either an ordinary election or bi-election ·
- A capability test – the Community Council may be required to employ a clerk with relevant professional qualifications ·
- A capacity test such as a minimum budget of £200k ·
- A governance test – the Council has sound financial management (including internal and external audit), be contactable by email and have a suitable website.

As at 2022-23 the position continues as:

- There is a full Council of 16 members
- The current Clerk has the recommended ILCA qualification, the admin officer is currently studying ILCA. The Clerk will be undertaking the CILCA professional qualification.
- The Council's budget is in excess of £200k
- The Council has sound management and financial systems. Its accounts are scrutinised by others. Its internal audit is undertaken by JDH Business Services of Mold. Agendas, minutes, and contact details can be found at www.cefncommunitycouncil.co.uk., and at Cefn Library.
- The community can email the Clerk or Assistant at: cefnmawrparish@btconnect.com or cefncommunitycouncil@gmail.com

Cefn Community Council in conjunction with the Welsh Ambulance Service have worked to establish full coverage of Defibrillator units throughout our community at a total cost of £7600. The first unit installed at the George Edwards Hall was very kindly provided for through generous donations from people of our community, a fund-raising page was set up by Craig Roberts Butchers, Crane Street.

We were advised by Welsh Ambulance Service, people requiring the use of the defibrillators should not be more that 500 metres from them to allow for full coverage of the community we would need to install six units in total. The below locations will indicate where the units are being sited.



- Ty Mawr Country Park, Cae Gwilym Lane, Cefn.
- Hinds Shop Bro Gwilym, Cefn.
- George Edwards Hall, Well Street, Cefn.
- Llys Y Graig, Rock Road, Rhosymedre
- Eagles, Llangollen Road, Acrefair.
- Housing Office, Plas Madoc, Acrefair

Aspirations for the year ahead are to continue to work together with the community and continue to progress towards improving the wellbeing of our local residents.

We have social media platforms (Facebook and Twitter) which are regularly updated and checked. The council is responsive on these platforms so that we are engaging with the community as effectively as possible. Our social media is used to share and advertise local events, publish our own news such as the re-opening of the MUGA or the closure of the cemetery for remedial works. Posts are neutral and unopinionated. Members of the public are welcome to contact us via these platforms if they have a query.

Budget Estimate 2022-23

Income	
Precept	154776.00
Tesco Rent	25000.00

VAT Repayment	10000.00
Bank Int	30.00
Grant	15000.00
Burial Fees	12500.00
Gravestones	1400.00
War Graves	25.00
Wayleave	138.22
Lightsource	2800.00
Salix Loan	0.00
Hire of GE Hall	8000.00
Vodafone	5000.00
	234669.22

Expenditure

Plas Kynaston	1000.00
Sundries	10000.00
Audit/GDPR	2215.00
Wages/Tax & NI	71000.00
Community Agent	12360.00
Pension	9500.00
Grants	7000.00
Stationery/Post/Telephone	2300.00
Training	150.00
Repairs	5000.00
Insurance	5950.00
Rent Coed Richard	0.25
Remembrance	1300.00
Chairmans Fund	1000.00
Website	1100.00
Garden Competion	500.00
Fees/Subs/Travel	0.00
Playscheme	3425.00
Play Area Maintenance & Inspections WCBC	14420.00
Play Area Equipment	2000.00
Elections	5500.00
CCTV	2000.00
birthday flowers	150.00
summer/winter events	600.00
Plants Summer/Winter	1000.00
SLA Youth Club	11600.00
Gravedigging	5500.00
Sundries	1000.00

Cemetery Maintenance	12500.00
Water Rates	300.00
Rhosymedre Churchyard	0.00
Refuse Charge	1426.00
Supply/Repairs/ Lighting Maint	20000.00
new columns	8000.00
Salix Loan re-payment	14289.78
Cleaning Supplies	315.00
Lighting/Heating/Water	6000.00
Rates	6450.00
Sundries	4500.00
Repairs	5000.00
Hand Dryers	1400.00
Performing Rights	680.00
Renewals	450.00
Refuse Charges	566.00
	259447.03

COUNCIL MEMBERS 2022-2023

Cefn Ward

Sonia Benbow –Jones (Ind) tyger@tygertactics.com	4 The Haven, High St, Cefn Mawr LL14 3RN	823603 07532 780007
David Metcalfe (Ind) pkcgroup@hotmail.co.uk	Fron House, Canalside, Froncysyllte LL20 7RB	07796260666
Daniel Shaw (Ind) Dan.mathew.shaw@gmail.com	67 Heol Cefnydd, Cefn Mawr, LL14 3ND	07960072603
George Wood (Ind) Georgewood47@talktalk.net	12 Lllys Y Graig, Rock Road, Rhosymedre LL14 3YN	01978 513163 07932082737
Helen Brimfield (Ind) Helen.brimfield@yahoo.co.uk	2b Well street, Cefn Mawr LL14 3AF	07914765703

Plas Madoc Ward

Derek Wright (Lab) Derek.Wright@wrexham.gov.uk	Fern Villa, Church St, Rhosymedre LL14 3EA	822497
Katherine Tiltman (Ind) katherinetiltman@gmail.com	17 Cilycoed, Ruabon, Wrexham LI14 6AT	823240
Malcolm D Hughes (Ind)	“Pen y Coed”, Gardden, Ruabon LL14 6RD	820592

Ben Twigg (Ind) benjaminetwigg299@gmail.com	Cheshire Cottage, 10 Hughes Row, LL14 3UB	820179
Gaynor Wright (Lab) gaynor-wright1@hotmail.co.uk	Fern Villa, Church St, Rhosymedre LL14 3EA	822497

Rhosymedre and Cefn Bychan Ward

Pam Roberts (Ind) pamelaroberts784@gmail.com	14 Ffordd Pentre, Nant Parc, Johnstown, LL14 1PP	536114
--	---	--------

Acrefair and Penybryn Ward

Isabel M Twigg (Ind) itwigg300@gmail.com	Cheshire Cottage, Hughes Row, Acrefair LL14 3QU	820179
Paul Blackwell (Lab) Paul.Blackwell@wrexham.gov.uk	The Croft, Abernant, Acrefair, LL14 3SN	07855620891
Joan Jones (Ind) joan.jones6@talktalk.net	1 Vale Prospect, Chap Acrefair LL14 3TB	821562
Phil M Vaughan (Ind) pmv014@outlook.com	Ty Cymro, High St, Rhosymedre LL14 3Y	823185
Stewart Roberts (Ind) regionalpropertymaintenance@outlook.com	Supplied	07542883923

CLERK

Trina Nicholls-Smith Tel 01978 821298
Email: cefnmawrparish@btconnect.com

COMMUNITY AGENT

Marie Claire Hartshorne 07925 048711
Email: cefncommunityagent@gmail.com

OFFICE ASSISTANT

Natalie Hughes-Lloyd Tel 01978 821298
Email: cefncommunitycouncil@gmail.com

Follow us on Facebook: [cefncommunitycouncil](https://www.facebook.com/cefncommunitycouncil) and Twitter @[cefncommunitycouncil](https://twitter.com/cefncommunitycouncil)